



**Stainless Steelware / Plasticware / Sterile Containers / Instrument Stringers**

# Stainless Steelware

[www.sklarcorp.com](http://www.sklarcorp.com)



**SklarTite™ Sterilization Container System**

# SklarTite™

- **LIGHT-WEIGHT  
AIRCRAFT ALUMINUM**
- **MINIMIZE STERILIZATION  
COSTS WITH PATENTED  
LOW PROFILE DESIGN**
- **30 DAY INTRODUCTORY  
PRICING FOR THIS INNOVATIVE  
NEW PRODUCT FROM SKLAR**

**SEE PAGES 10 AND 11  
FOR MORE INFORMATION**

[www.skllarcorp.com](http://www.skllarcorp.com)



Stainless Steelware / Plasticware / Instrument Trays and Stringers

**Everyday** - Sklar and your Sklar Dealer fulfill your product needs with uncommon value.

**Sklar -  
Quality you can feel... see...  
and trust!**

---

889 South Matlack Street  
West Chester, PA 19382

ph: 800.221.2166 / 610.430.3200  
fx: 610.696.9007  
e-mail: [surgi@sklarcorp.com](mailto:surgi@sklarcorp.com)  
e-mail: [international@sklarcorp.com](mailto:international@sklarcorp.com)

[www.sklarcorp.com](http://www.sklarcorp.com)





# SKLAR STAINLESS STEELWARE PRODUCTS

## IODINE CUP



<b>10-1670</b>	6 oz.	3 7/16" x 2"	<b>10-1670-12</b> - Pk/12 <b>10-1670-48</b> - Pk/48
<b>10-1671</b>	14 oz.	4 3/8" x 2 5/8"	<b>10-1671-12</b> - Pk/12 <b>10-1671-48</b> - Pk/48

## TUMBLER



<b>10-1536</b>	7 oz.	2 7/8" x 3 1/8"	<b>10-1536-12</b> - Pk/12
----------------	-------	-----------------	---------------------------

## MEDICINE CUP



Graduated Measure			
<b>10-1675</b>	2 oz.		<b>10-1675-12</b> - Pk/12 <b>10-1675-48</b> - Pk/48
Graduated, Plastic Autoclavable			
	2 oz.		<b>10-1585-12</b> - Pk/12 <b>10-1585-48</b> - Pk/48

## MEDICINE CUP



Disposable			
<b>08-0500</b>	1 oz.	Cs/5000, Non-Sterile	
<b>96-7027</b>	2 oz.	Pk/25, Sterile	

## OINTMENT JAR



With Cover			
<b>10-1525</b>	9 oz.	3 1/8" x 2 3/4"	<b>10-1525-12</b> - Pk/12

## DRESSING JAR



With Cover			
<b>10-1523</b>	1/2 qt.	4 1/8" x 2 1/4"	<b>10-1523-12</b> - Pk/12
<b>10-1533</b>	1 1/4 qt.	4 1/8" x 5 1/2"	<b>10-1533-12</b> - Pk/12
<b>10-1538</b>	1 7/8 qt.	4 7/8" x 6 1/4"	<b>10-1538-12</b> - Pk/12
<b>10-1527</b>	3 qt.	5 7/8" x 6 3/4"	<b>10-1527-12</b> - Pk/12
<b>10-1543</b>	4 3/4 qt.	6 3/4" x 7 3/4"	<b>10-1543-12</b> - Pk/12
<b>10-1544</b>	6 qt.	7 1/4" x 8 3/8"	<b>10-1544-12</b> - Pk/12
<b>10-1547</b>	8 qt.	8" x 9 3/8"	<b>10-1547-12</b> - Pk/12

## PITCHER/BEAKER



<b>10-1172</b>	125 ml	2 1/8" x 2 5/8"	
<b>10-1173</b>	250 ml	2 5/8" x 3 1/4"	
<b>10-1174</b>	600 ml	3 3/8" x 4 5/8"	
<b>10-1175</b>	1200 ml	4 1/8" x 6 1/16"	
<b>10-1176</b>	2000 ml	4 7/8" x 7 1/8"	
<b>10-1177</b>	3000 ml	5 1/2" x 8 1/4"	
<b>10-1178</b>	4000 ml	6 1/8" x 8 7/8"	
With Closed Handle			
<b>10-1180</b>	3000 ml	6 1/16" x 7"	
<b>10-1181</b>	4000 ml	6 7/8" x 8 7/8"	
<b>10-1539</b>	2000 ml	5 1/16" x 6 5/8"	<b>10-1539-12</b> - Pk/12

## FORCEPS JAR



<b>10-1550</b>	1" x 4"	Base 2 7/16"	<b>10-1550-12</b> - Pk/12
<b>10-1541</b>	2 1/4" x 4 1/2"	Base 3 5/8"	<b>10-1541-12</b> - Pk/12
<b>10-1545</b>	2 1/4" x 7"	Base 3 11/16"	<b>10-1545-12</b> - Pk/12





# SKLAR STAINLESS STEELWARE PRODUCTS

## STORAGE CONTAINER



<b>10-1140</b>	1 1/4 qt.	4 9/16" x 5 3/4"	
<b>10-1142</b>	2 1/16 qt.	5 3/8" x 6 5/8"	
<b>10-1144</b>	3 3/16 qt.	6 1/2" x 7"	
<b>10-1146</b>	4 3/4 qt.	7 3/8" x 7 7/8"	
<b>10-1148</b>	6 1/8 qt.	8" x 8 3/4"	
<b>10-1150</b>	8 1/4 qt.	8 3/4" x 9 5/8"	
<b>10-1152</b>	12 1/8 qt.	9 5/8" x 11"	
<b>10-1540</b>	2 qt.	5 7/16" x 6 5/8"	<b>10-1540-12</b> - Pk/12

## GRADUATED MEASURES



Stainless Steel

<b>10-1552</b>	16 oz.	3 3/4" x 4 5/8"	<b>10-1552-12</b> - Pk/12
<b>10-1510</b>	32 oz.	4 3/4" x 5 1/4"	<b>10-1510-12</b> - Pk/12
<b>10-1674</b>	64 oz.	5 1/2" x 6 1/2"	<b>10-1674-12</b> - Pk/12

## MIXING/SOLUTION BOWL



<b>10-1488</b>	7/8 qt.	6 5/8" x 2 1/2"	<b>10-1488-12</b> - Pk/12
<b>10-1491</b>	1 5/8 qt.	8 1/8" x 3"	<b>10-1491-12</b> - Pk/12
<b>10-1492</b>	3 qt.	9 3/4" x 4"	<b>10-1492-12</b> - Pk/12
<b>10-1493</b>	5 qt.	11 7/8" x 4 1/2"	<b>10-1493-12</b> - Pk/12
<b>10-1494</b>	6 3/4 qt.	12 3/4" x 5 1/4"	
<b>10-1495</b>	8 qt.	13 5/16" x 5 7/16"	

## MIXING/SOLUTION BOWL



Disposable, Sterile

<b>96-7174</b>	32 oz.	Pk/20
----------------	--------	-------

## SPONGE BOWL



<b>10-1496</b>	12 oz.	4 1/2" x 2"	<b>10-1496-12</b> - Pk/12
<b>10-1498</b>	22 oz.	5" x 2 3/8"	<b>10-1498-12</b> - Pk/12
<b>10-1484</b>	29 oz.	5 9/16" x 2 9/16"	<b>10-1484-12</b> - Pk/12
<b>10-1485</b>	36 oz.	6 1/4" x 2 3/4"	<b>10-1485-12</b> - Pk/12
<b>10-1483</b>	48 oz.	7 1/8" x 2 3/4"	<b>10-1483-12</b> - Pk/12
<b>10-1486</b>	64 oz.	7 9/16" x 3"	<b>10-1486-12</b> - Pk/12

## SPONGE BOWL



Reusable Plastic, Autoclavable

<b>10-1502</b>	40 oz.	6 3/8" x 3"	<b>10-1502-12</b> - Pk/12
----------------	--------	-------------	---------------------------

## SOLUTION BASIN



<b>10-1489</b>	4 1/2 qt.	12" x 4 1/2"	<b>10-1489-12</b> - Pk/12
<b>10-1490</b>	6 qt.	12 3/4" x 4 1/2"	<b>10-1490-12</b> - Pk/12
<b>10-1505</b>	7 qt.	13 5/8" x 4 5/8"	<b>10-1505-12</b> - Pk/12
<b>10-1507</b>	9 1/2 qt.	14 1/2" x 5"	<b>10-1507-12</b> - Pk/12





# SKLAR STAINLESS STEELWARE PRODUCTS

## SOLUTION BASIN



Reusable Plastic, Autoclavable

**10-1504** | 7 qt. | 13 5/8" x 4 5/8" | **10-1504-12** - Pk/12

## SOLUTION BASIN



Disposable, Sterile with CSR Wrap

**96-1679** | 7 qt. | Pk/5

## EMESIS BASIN



<b>10-1497</b>	10 oz.	6 5/8" x 3 1/2" x 1 1/2"	<b>10-1497-12</b> - Pk/12
<b>10-1698</b>	12 oz.	8 1/8" x 3 5/8" x 1 5/8"	<b>10-1698-12</b> - Pk/12
<b>10-1699</b>	26 oz.	9 7/8" x 4 1/2" x 2 1/8"	<b>10-1699-12</b> - Pk/12
<b>10-1487</b>	48 oz.	12 1/8" x 5 3/4" x 2 1/4"	

## HOSPITAL KICK BUCKET



With Lid and Roll Stand

**10-1551** | 13 qt. | 11 5/8" x 9 1/4"

## HOSPITAL BUCKET



With Lid

<b>10-1450</b>	13 qt.	11 5/8" x 9 1/4"
<b>10-1451</b>	16 qt.	11 3/4" x 10 1/8"

Without Lid

<b>10-1182</b>	13 qt.	11 5/8" x 9 1/4"
<b>10-1183</b>	16 qt.	11 3/4" x 10 1/8"
<b>10-1184</b>	20 qt.	13 3/4" x 11 3/16"

## STORAGE CONTAINERS



With Lid

<b>10-1186</b>	3 gal.	10 3/16" x 9"
<b>10-1188</b>	4 gal.	13" x 9"
<b>10-1189</b>	5 gal.	13" x 11"
<b>10-1190</b>	6 gal.	13" x 13"

## FUNNELS



With Hanging Hook

<b>10-1157</b>	2 3/8 oz.	3" x 3 3/4"
<b>10-1158</b>	6 3/8 oz.	4 1/8" x 4 7/8"
<b>10-1159</b>	13 oz.	5 1/8" x 5 5/8"
<b>10-1160</b>	22 1/4 oz.	6 1/4" x 6 5/8"
<b>10-1170</b>	32 oz.	7" x 8 3/8"
<b>10-1171</b>	64 oz.	8 3/8" x 9 1/2"

## LAB / UTILITY SCOOPS



**10-1192** | 5" x 2 1/2"

**10-1193** | 5" x 7 1/2"

## MAYO TRAY



Perforated

<b>10-1684</b>	10" x 6 1/2" x 3/4"	<b>10-1684-12</b> - Pk/12
<b>10-1685</b>	13 3/4" x 9 3/4" x 3/4"	<b>10-1685-12</b> - Pk/12
<b>10-1686</b>	15 1/8" x 10 5/8" x 3/4"	<b>10-1686-12</b> - Pk/12
<b>10-1687</b>	17" x 11 5/8" x 3/4"	<b>10-1687-12</b> - Pk/12
<b>10-1688</b>	19 1/8" x 12 5/8" x 3/4"	<b>10-1688-12</b> - Pk/12

## MAYO TRAY



Non-Perforated

<b>10-1690</b>	10" x 6 1/2" x 3/4"	<b>10-1690-12</b> - Pk/12
<b>10-1691</b>	13 11/16" x 9 13/16" x 3/4"	<b>10-1691-12</b> - Pk/12
<b>10-1692</b>	15 1/8" x 10 5/8" x 3/4"	<b>10-1692-12</b> - Pk/12
<b>10-1693</b>	17" x 10 5/8" x 3/4"	<b>10-1693-12</b> - Pk/12
<b>10-1694</b>	19 1/8" x 12 5/8" x 3/4"	<b>10-1694-12</b> - Pk/12
<b>10-1695</b>	21 1/4" x 16 1/4" x 7/8"	<b>10-1695-12</b> - Pk/12





# SKLAR STAINLESS STEELWARE PRODUCTS

## MAYO TRAY



Reusable Plastic, Autoclavable  
Features No-Slip Textured Surface

Perforated

<b>10-1965</b>	10 1/8" x 6 5/8"	<b>10-1965-12</b> - Pk/12
<b>10-1966</b>	10 7/16" x 13 9/16"	<b>10-1966-12</b> - Pk/12
<b>10-1967</b>	11 3/4" x 16"	<b>10-1967-12</b> - Pk/12

Non-Perforated

<b>10-1960</b>	10 1/8" x 6 5/8"
<b>10-1961</b>	10 7/16" x 13 9/16"

## INSTRUMENT TRAY



With Rolled Bead Edge

<b>10-1532</b>	25" x 15" x 7/8"	
<b>10-1876</b>	10" x 6 1/2" x 3/4"	<b>10-1876-12</b> - Pk/12
<b>10-1883</b>	13 11/16" x 9 13/16" x 3/4"	<b>10-1883-12</b> - Pk/12
<b>10-1884</b>	15 1/8" x 10 5/8" x 3/4"	<b>10-1884-12</b> - Pk/12
<b>10-1683</b>	17" x 11 5/8" x 3/4"	<b>10-1683-12</b> - Pk/12
<b>10-1888</b>	19 1/8" x 12 5/8" x 3/4"	<b>10-1888-12</b> - Pk/12
<b>10-1680</b>	21 1/4" x 16 1/4" x 7/8"	<b>10-1680-12</b> - Pk/12

## INSTRUMENT TRAY



Perforated

<b>10-1758</b>	12 3/4" x 10 3/8" x 2 1/2"
<b>10-1757</b>	12 3/4" x 10 3/8" x 1 1/4"
<b>10-1759</b>	20 3/4" x 12 3/4" x 2 1/2"
<b>10-1941</b>	20 3/4" x 12 3/4" x 1 1/4"
<b>10-1942</b>	20 3/4" x 12 3/4" x 6"

## HIGH SIDED INSTRUMENT TRAY



Perforated

<b>10-1879</b>	12 1/4" x 7 3/4" x 2 1/4"
<b>10-1892</b>	12" x 7 3/4" x 2"
<b>10-1874</b>	10" x 6 1/2" x 2"
<b>10-1943</b>	12 3/4" x 10 3/8" x 4"

Non-Perforated

<b>10-1194</b>	16 1/2" x 10" x 2"
----------------	--------------------

## STERILIZATION TRAY



<b>10-1700</b>	8 1/2" x 8" x 1 1/4"
<b>10-1701</b>	10" x 6 1/2" x 3/4"
<b>10-1702</b>	10 1/2" x 10" x 1 1/2"
<b>10-1703</b>	15" x 10 1/2" x 1 1/4"
<b>10-1707</b>	8 1/2" x 12" x 1 1/4"
<b>10-1708</b>	8" x 14" x 1 1/4"

## STERILIZATION TRAYS/BATH SETS



Solid Tray

<b>10-1948</b>	20 3/4" x 12 3/4" x 6"	<b>10-1948-12</b> - Pk/12
----------------	------------------------	---------------------------

Perforated Tray

<b>10-1949</b>	20 3/4" x 12 3/4" x 4"	<b>10-1949-12</b> - Pk/12
----------------	------------------------	---------------------------

Cover

<b>10-1535</b>		<b>10-1535-12</b> - Pk/12
----------------	--	---------------------------

## DOUBLE DECK MICRO TRAY



<b>10-1717</b>	10" x 15" x 2 1/4"
----------------	--------------------

## STERILIZATION TRAY



<b>10-1706</b>	8 1/2" x 8" x 1 1/4" With 2 1/2" x 2 1/2" Compartment
<b>10-1716</b>	10 1/2" x 20" x 2 1/2" With 10 1/2" x 5" Compartment



## FLASH STERILIZATION TRAY



**10-1711** | 10" x 6 1/2" x 2"

## RETRIEVING HANDLE



**10-1712** | Single Handle For Flash Tray Pictured at Left

## STERILIZATION TRAYS



Sterilization Box (not pictured)  
**10-1705** | 6 3/8" x 3 3/8" x 1 3/4"  
 Sterilization Trays (pictured)  
**10-1710** | 10" x 6 1/2" x 2 1/2"  
**10-1714** | 15" x 10 1/2" x 3 1/2"  
**10-1718** | 10" x 6 1/2" x 2"  
**10-1720** | 20" x 10 1/2" x 3 1/2"

## LIFTING HANDLES



**10-1725** | One Pair For Trays Pictured at Left

## CLEANING BASKET



Perforated  
**10-1560** | 12 3/4" x 10 3/8" x 6"

## INSTRUMENT TRAY



**10-1870** | 12 3/4" x 10 1/2" x 6" | **10-1870-6** - Pk/6  
**10-1746** | 12 3/4" x 10 3/8" x 2 1/2" | **10-1746-6** - Pk/6  
**10-1747** | 12 3/4" x 10 3/8" x 4" | **10-1747-6** - Pk/6  
 Cover For 10-1746 & 10-1747  
**10-1882** | | **10-1882-6** - Pk/6

## INSTRUMENT CATH TRAY



**10-1738** | 8 7/8" x 5" x 2" | **10-1738-12** - Pk/12  
**10-1760** | 8 7/8" x 5" x 3" | **10-1760-12** - Pk/12  
 Flat Cover For 10-1738 (not pictured)  
**10-1722** | | **10-1722-12** - Pk/12  
 Dome Cover For 10-1760 (pictured)  
**10-1761** | | **10-1761-12** - Pk/12

## INSTRUMENT TRAY



Solid  
**10-1850** | 12 3/4" x 10 1/2" x 2 1/2"  
**10-1860** | 12 3/4" x 10 1/2" x 4"  
**10-1877** | 12 1/4" x 7 3/4" x 2 1/4" | **10-1877-12** - Pk/12  
**10-1744** | 12 3/4" x 6 7/8" x 2 1/2" | **10-1744-12** - Pk/12  
 Perforated  
**10-1852** | 12 3/4" x 10 1/2" x 2 1/2"  
**10-1862** | 12 3/4" x 10 1/2" x 4"  
**10-1864** | Cover For Above Trays  
**10-1878** | Cover For 10-1877 | **10-1878-12** - Pk/12  
**10-1724** | Cover For 10-1744 | **10-1724-12** - Pk/12





# SKLAR STAINLESS STEELWARE PRODUCTS

## STERILIZATION TRAY



<b>10-1750</b>	6 qt.	20 3/4" x 6 3/8" x 4"	<b>10-1750-12</b> - Pk/12
<b>10-1752</b>	9 qt.	20 3/4" x 6 3/8" x 6"	<b>10-1752-12</b> - Pk/12
<b>10-1854</b>	Cover For Above Trays		<b>10-1854-12</b> - Pk/12

## CATHETER TRAY



<b>10-1955</b>	8 3/4" x 3 1/4" x 1 1/2"	<b>10-1955-12</b> - Pk/12
<b>10-1956</b>	Cover For 10-1955	<b>10-1956-12</b> - Pk/12
<b>10-1886</b>	17 1/4" x 4 1/2" x 2"	<b>10-1886-12</b> - Pk/12
<b>10-1887</b>	Cover For 10-1886	<b>10-1887-12</b> - Pk/12

## INSTRUMENT TRAY



<b>10-1742</b>	10 3/8" x 6 3/8" x 2 1/2"	<b>10-1742-12</b> - Pk/12
<b>10-1542</b>	Cover For 10-1742	<b>10-1542-12</b> - Pk/12
<b>10-1950</b>	12 3/4" x 10 3/8" x 2 1/2"	<b>10-1950-12</b> - Pk/12
<b>10-1952</b>	12 3/4" x 10 3/8" x 4"	<b>10-1952-12</b> - Pk/12
<b>10-1882</b>	Cover For 10-1950 & 10-1952	<b>10-1882-12</b> - Pk/12

## STERILIZATION TRAY



<b>10-1948</b>	20 3/4" x 12 3/4" x 6"	<b>10-1948-12</b> - Pk/12
<b>10-1953</b>	20 3/4" x 12 3/8" x 2 1/2"	<b>10-1953-12</b> - Pk/12
<b>10-1954</b>	20 3/4" x 12 3/4" x 4"	<b>10-1954-12</b> - Pk/12
<b>10-1535</b>	Cover For Above Trays	<b>10-1535-12</b> - Pk/12

## INSTRUMENT TRAY



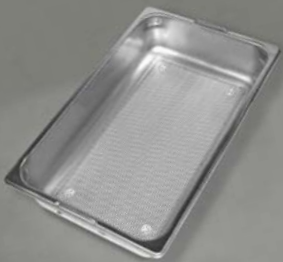
<b>10-1748</b>	16 1/2" x 10" x 2 1/2"	<b>10-1748-12</b> - Pk/12
<b>10-1756</b>	Cover For 10-1748	<b>10-1756-12</b> - Pk/12
<b>10-1753</b>	13 7/8" x 12 7/8" x 2 1/2"	<b>10-1753-12</b> - Pk/12
<b>10-1754</b>	Cover For 10-1753	<b>10-1754-12</b> - Pk/12
<b>10-1755</b>	6 7/8" x 4 1/4" x 2"	<b>10-1755-12</b> - Pk/12
<b>10-1737</b>	Cover For 10-1755	<b>10-1737-12</b> - Pk/12

## STERILIZATION TRAY



<b>10-1740</b>	8 7/8" x 5" x 2"
----------------	------------------

## MESH BOTTOM STERILIZATION TRAY



<b>10-1957</b>	20 3/4" x 12 3/4" x 4"
----------------	------------------------

## CLEANING BASKET



<b>10-1729</b>	4 1/4" x 7 1/4" x 2"
<b>10-1731</b>	6" x 9" x 3"
<b>10-1732</b>	8 1/2" x 12 1/2" x 3 1/2"
<b>10-1733</b>	9 1/2" x 16" x 4"
<b>10-1734</b>	12" x 21" x 5"
<b>10-1736</b>	14" x 20" x 5"



**ROUND BASIN**



Disposable  
**08-1011** | 5 qt. | Cs/50

**RECTANGULAR BASIN**



Disposable  
**08-1012** | 6 qt. | Cs/50

**BED PANS**



Pontoon  
**08-1013** | Cs/20  
 Stackable  
**08-1014** | Cs/50  
 Stackable, Heavy Duty  
**08-1015** | Cs/25

**BED PAN WITH HANDLE**



Female  
**08-1016** | Cs/50

**EMESIS BASINS**



700 cc  
**08-1017** | Cs/250  
 500 cc  
**08-1018** | Cs/250

**SOAP DISH**



3-1/2" x 2-1/4"  
**08-1019** | Cs/1000

**PITCHER**



with attached cover  
**08-1020** | Cs/100

**SITS BATH**



with graduated bag  
**08-1021** | Cs/10



## 24 HOUR COLL. BOTTLE



**08-1000** | Cs/40

## URINALS



1 quart  
**08-1001** | Cs/50

1 quart, heavy duty  
**08-1002** | Cs/50

## SPECIMEN CUP



8 oz.  
**08-1003** | Cs/250

## SPECIMEN PAN



800 cc  
**08-1004** | Cs/100

## GRADUATED MEASURE



32 oz. Tri-Lip  
**08-1005** | Cs/200

## PLASTIC CONTAINERS



16 oz.  
**08-1006** | Cs/100  
32 oz.  
**08-1007** | Cs/100  
68 oz.  
**08-1008** | Cs/50

## DENTURE CUP



8 oz.  
**08-1009** | Cs/250

## BULB SYRINGE



Individually wrapped, Sterile, 60 cc  
**08-1010** | Cs/50



## SKLARTITE™ STERILIZATION CONTAINER SYSTEM

Sklar Surgical Instruments and Sklartite™ Containers provide a perfect combination of product and service to meet all surgical requirements.



### SKLARTITE™ SEALED CONTAINERS

Perforated Top - Solid Bottom\*

#### Extra-Small - 8" Wide x 12" Long

- 10-1217 4" Height
- 10-1218 5" Height
- 10-1219 6" Height

#### Small - 12" Wide x 12" Long

- 10-1220 4" Height
- 10-1221 5" Height
- 10-1222 6" Height
- 10-1223 7" Height

#### Medium - 12" Wide x 17" Long

- 10-1226 4" Height
- 10-1227 5" Height
- 10-1228 6" Height
- 10-1229 7" Height

#### Large - 12" Wide x 23" Long

- 10-1232 4" Height
- 10-1233 5" Height
- 10-1234 6" Height
- 10-1235 7" Height



\* Perforated Bottoms Are Also Available.  
Contact Your Sklar Account Manager For Details.

The SklarTite™ line of sealed containers provides a simple yet effective system for the sterilization of operating room instruments. Designed for strength, yet light-weight, SklarTite™ containers are formed from an aircraft grade anodized aluminum alloy. The containers are available in a variety of sizes.



### SKLARTITE™ BASKETS

#### Extra-Small

7-1/2" W x 11" L

10-1210	2" Height
10-1212	3" Height
10-1214	4" Height
10-1216	5" Height

#### Small

11" W x 11" L

10-1240	2" Height
10-1242	3" Height
10-1244	4" Height
10-1245	5" Height
10-1247	6" Height

#### Medium

11" W x 16" L

10-1248	2" Height
10-1250	3" Height
10-1252	4" Height
10-1253	5" Height
10-1255	6" Height

#### Large

11" W x 22" L

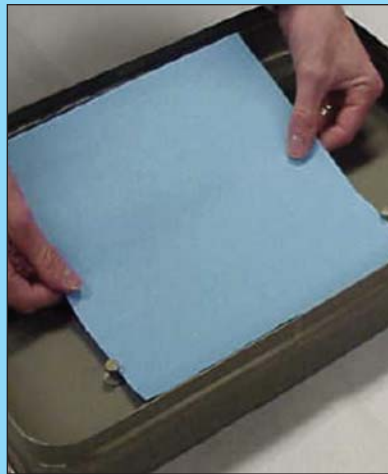
10-1256	2" Height
10-1258	3" Height
10-1260	4" Height
10-1262	5" Height
10-1263	6" Height



### FOAM INSERTS DISPOSABLE

Blue, Pack of 75

10-1207	3/16" x 20" x 10-1/2"
10-1205	3/8" x 20" x 10-1/2"



### REPLACEMENT FILTERS, DISPOSABLE

1,000 Per Case

10-1278	7-3/4" x 7-1/4"
10-1283	9-1/2" x 9-1/2"



### SILICONE MATS

10-1282	Extra Small	7-1/4" x 10-3/4"
10-1284	Small	11" x 11"
10-1286	Medium	11" x 16"
10-1288	Large	11" x 22"





# SKLAR INSTRUMENT STRINGERS / BRUSHES

## E-Z LOCK INSTRUMENT STRINGER



<b>10-1806</b>	6" x 2 1/2"
<b>10-1808</b>	8" x 2 1/2"
<b>10-1810</b>	10" x 2 1/2"
<b>10-1812</b>	12" x 2 1/2"
<b>10-1816</b>	16" x 2 1/2"

## INSTRUMENT STRINGER



<b>10-1340</b>	6"
<b>10-1342</b>	8"
<b>10-1344</b>	10"
<b>10-1346</b>	12"
<b>10-1347</b>	14"
<b>10-1348</b>	16"

**CONTACT SKLAR FOR INFORMATION ON OUR COMPLETE LINE OF STRINGERS & BRUSHES**

## INSTRUMENT CLEANING BRUSHES



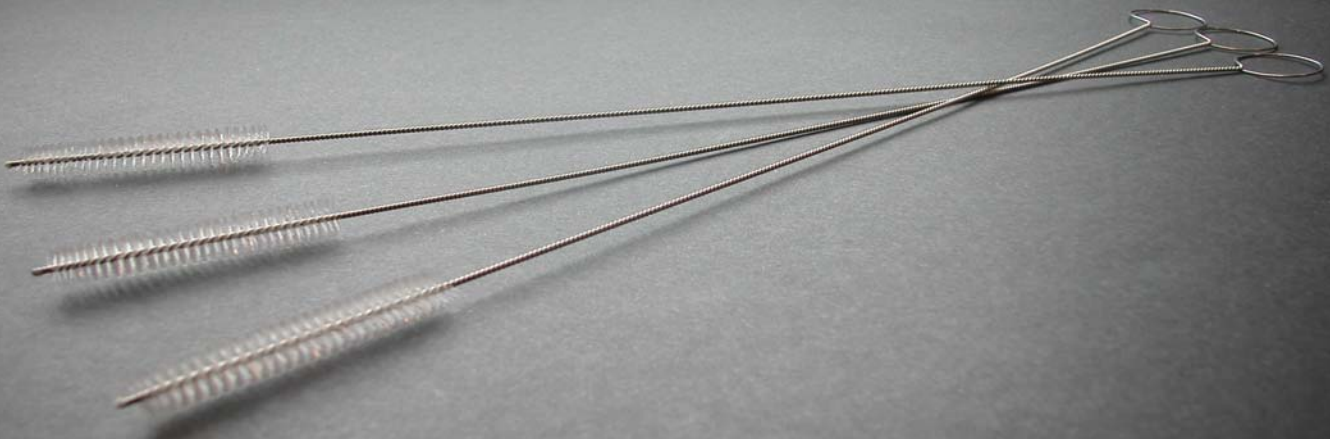
Cleaning Brush		
<b>10-1650</b>	Stainless Steel Bristles	Pk/3
<b>10-1651</b>	Nylon Bristles	Pk/3
<b>10-1652</b>	Stainless Steel Bristles	Pk/12
<b>10-1657</b>	Nylon Bristles	Pk/12
<b>10-1658</b>	Stainless Steel Bristles	Pk/24
<b>10-1659</b>	Nylon Bristles	Pk/24
Disposable		
<b>10-1465</b>	Nylon Bristles	Pk/12
<b>10-1468</b>	Nylon Bristles	Pk/24

## TRAC TUBE BRUSH



<b>78-2821</b>	6" x 1/2" diameter	Pk/6
<b>78-2822</b>	7" x 5/8" diameter	Pk/6
<b>78-2823</b>	7-1/2" x 3/4" diameter	Pk/6
<b>78-2813</b>	1 each of above	Pk/3

## CANNULA INSTRUMENT CLEANING BRUSHES



<b>10-1350</b>	12" length	2mm diameter	Pack/3
<b>10-1660</b>	12" length	3mm diameter	Pack/3
<b>10-1661</b>	12" length	3mm diameter	Pack/12
<b>10-1352</b>	12" length	4mm diameter	Pack/3
<b>10-1354</b>	12" length	5mm diameter	Pack/3
<b>10-1356</b>	12" length	6mm diameter	Pack/3
<b>10-1663</b>	12" length	3mm diameter	Pack/24
<b>10-1664</b>	15" length	9mm diameter	Pack/3
<b>10-1665</b>	15" length	9mm diameter	Pack/12
<b>10-1666</b>	15" length	9mm diameter	Pack/24
<b>10-1668</b>	15" length	25mm diameter	Pack/3
<b>10-1669</b>	15" length	25mm diameter	Pack/12
<b>10-1672</b>	15" length	25mm diameter	Pack/24
<b>10-1362</b>	18" length	5mm diameter	Pack/3
<b>10-1364</b>	18" length	10mm diameter	Pack/3
<b>10-1366</b>	18" length	15mm diameter	Pack/3
<b>78-2824</b>	19" length	3mm diameter	Pack/3
<b>10-1370</b>	24" length	2.5mm diameter	Pack/3
<b>10-1372</b>	24" length	5mm diameter	Pack/3
<b>10-1374</b>	24" length	7mm diameter	Pack/3
<b>10-1376</b>	24" length	10mm diameter	Pack/3

**\* Medical Nylon Bristles  
And Stainless Steel Wire  
Brushes Are Reusable.**



**PRODUCTS FOR THE PROFESSIONAL CARE OF YOUR SURGICAL INSTRUMENTS**

**Sklar Soak™**

Non-Glutaraldehyde Decontaminant/  
Cleaner Disinfectant  
10-1603 - Case of 4 gallons

**Sklar Kleen™**

Cleaning Detergent  
Liquid  
10-1612 Case of 6 - 8 oz. bottles  
10-1613 Case of 4 gallons  
Powder  
10-1630 Case of 6 - 3 1/2 lb. pithers  
10-1607 5 lb. pail  
10-1608 Case of 4 - 5 lb. pails

**Sklar Instru-Guard Lube™**

Instrument Lubricant  
10-1635 - Case of 4 gallons, Concentrated  
10-1636 - Case of 12 - 8 oz. spray bottles

**Sklar Spray-Zyme™**

Surgical Instrument Pre-Cleaner/Foam Spray  
10-2724 - Case of 4 gallons  
10-2722 - Case of 12 - 22 oz. spray bottles

**Sklar Enzymatic™ Detergent**

10-2777 - Case of 4 gallons

**Sklar-Zyme™ Enzymatic Detergent**

10-2774 - Box of 32 - 1/2 oz. pouches

**Sklar Instru-Guard™ One Step**

A One Step Instrument Cleaner/Lubricant  
10-2800 - Case of 4 gallons

**Sklar Disinfectant™**

Non-Glutaraldehyde  
10-1653 - Case of 4 gallons  
10-1643 - Case of 6 - 24 oz. spray bottles

**Sklar Polish™**

The Answer To Tough Stains And Tarnish  
10-1626 - Case of 12 - 8 oz. jars  
10-1629 - Case of 6 - 8 oz. jars

**Sklar-Cide™**

High Level Disinfecting Solution  
10-1623 - Case of 4 gallons

DISTRIBUTED BY:



889 South Matlack Street  
West Chester, PA 19382

ph: 800.221.2166 / 610.430.3200  
fx: 610.696.9007

e-mail: [surgi@sklarcorp.com](mailto:surgi@sklarcorp.com)  
e-mail: [international@sklarcorp.com](mailto:international@sklarcorp.com)

[www.sklarcorp.com](http://www.sklarcorp.com)

99-0338